

USER GUIDE AND WARRANTY INFORMATION

jamm
TRANCE MAX

HEY THERE!

Thank you for purchasing the **JAM Trance Max**. Check out the sections below for all the important information about your new speaker.

WE'RE HERE TO HELP. CONTACT US!

You've got questions? We've got answers.

Contact a Consumer Relations representative by phone or email to help answer any questions. Please be sure to have the model number of your product available. (Hint: It's HX-P170)

Register your speaker! Information about where you bought it and how you're using it is like gold for the people who make these speakers.

To register, visit:

USA: www.jamaudio.com/customer-support/product-registration

CAN: <http://canada.jamaudio.com/product-registration>

USA

✉ cservice@jamaudio.com
☎ 1.888.802.0040
8:30am–7:00pm EST M–F

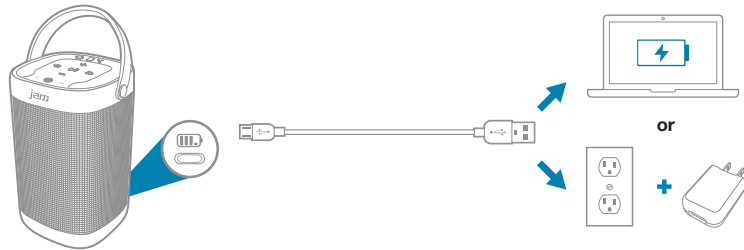
CANADA

✉ cservice@homedicsgroup.ca
☎ 1.888.225.7378
8:30am–5:00pm EST M–F

JUST CHARGE IT

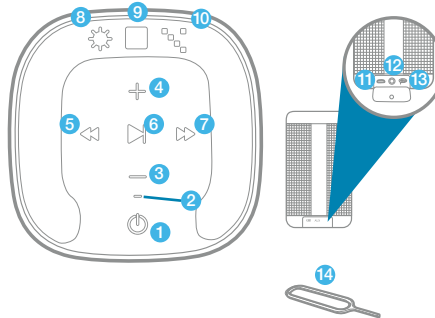
Charging the speaker is so easy you've probably figured it out by now, but just in case, you've got two options: you can charge it using your computer or a wall outlet. Fully charge the Trance Max for up to 10 hours of party time.

1. The cord that came with the speaker — the one with the USB on one end and the micro USB on the other — will work with your computer.
2. If you want to use the wall outlet, you can use the included adapter or use any USB AC adapter, including the one for your cell phone.



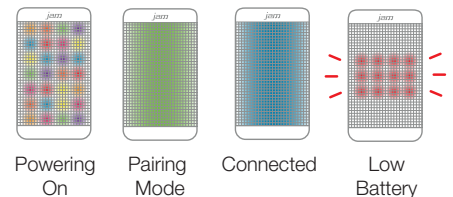
CONTROL YOUR DESTINY ... OR AT LEAST YOUR SPEAKER

1. This is the power button
2. This is the microphone
3. Turn the music down
4. Turn the music up
5. Skip back a track
6. Push it to play, push it again to pause
7. Jam on to the next song
8. Control the brightness of your light show
9. Choose between 7 different light colors
10. Shuffle through 6 different light shows
11. The power cord goes here
12. Here's where you hook it up old-school
13. Toggle between languages here
14. Language selector pin



SHED SOME LIGHT

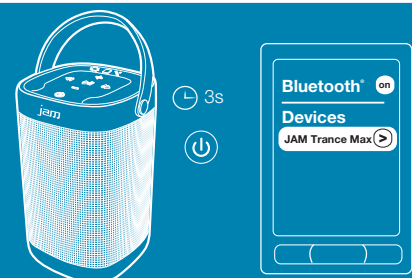
When they're not rocking out, the LED lights on your speaker let you know what it's doing.



BLUETOOTH® CONNECTION — IT'S A SETUP

Like any amazing couple, this one starts with a connection — one between your device and the speaker's *Bluetooth*. Here's how it works:

1. Make sure the smartphone, tablet, or computer you're using with the speaker has *Bluetooth*.
2. Turn on the speaker (press and hold the power button for 3 seconds) and look for the front screen to illuminate with a multicolored light show.
3. Do whatever your device needs you to do on its end.
4. Look for JAM Trance Max in your device's *Bluetooth* list or click YES.



Continued on page 2.

BLUETOOTH® CONNECTION, CONTINUED

5. Now hit PLAY on your speaker and crank it up — or down if you're lame.

The device and *Bluetooth* will find each other every time, as long as the speaker is set to *Bluetooth* and your device's *Bluetooth* is, you know, on.

If you're connecting to a computer, you may have some extra steps on that end. You'll have to get that information from the computer company.

Depending on your device, you may be prompted to enter a pairing code. If prompted, enter "0000" as the code.

To disable pairing of an existing device and pair a new device, press and hold the + and - buttons for 5 seconds to activate pairing mode.

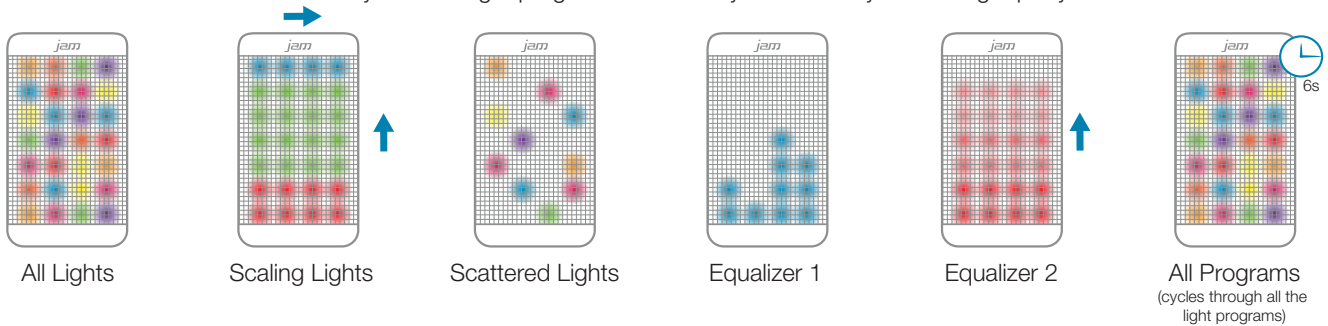
Note: If you turn on your Trance Max but haven't started the party yet, it will automatically power off after 2 minutes of unpaired inactivity.

Note: Once you've paired, if you pause the party for 15 minutes or more, the JAM Trance Max will automatically shut off to preserve battery power.



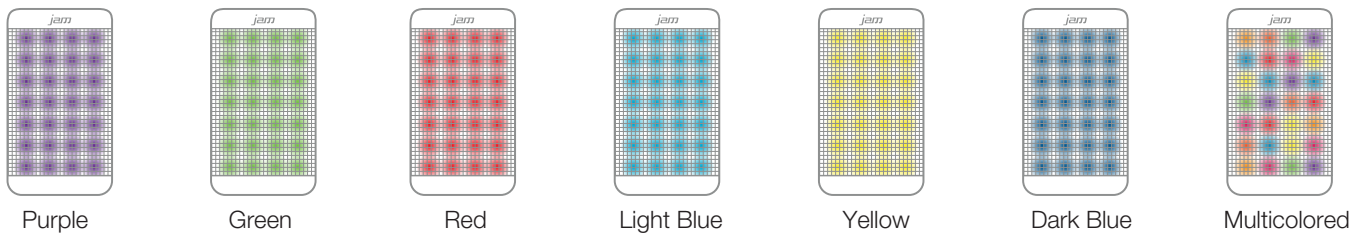
PUTTING ON A SHOW!

The Trance Max comes with 6 distinctly different light programs that allow you to throw your own light party.



LIGHT IT UP

Not only does the Trance Max let you pick the light pattern you want to jam out to, but you can also choose the color. The Trance Max has 7 different colors to choose from.



HELLO? SPEAKERPHONE? YES!

When friends call asking to join the party — and you know they will — answer the phone without disconnecting from your JAM Trance Max. Yes, that's right. Your speaker is a speakerphone, too. How amazing is that? Here's how it works:

1. Make sure your phone and speaker are connected through *Bluetooth*.
2. Answering and ending a call works the same way: simply click the PLAY/PAUSE button on your Trance Max.
3. If you'd rather not talk, hold down the PLAY/PAUSE button on your Trance Max for 3 seconds to ignore the call.

THE COOLEST PART: The Trance Max knows when a call is coming in and pauses the music before ringing. When you hang up, the music starts where it left off — and so does the party. If it's you making the call, just start dialing from your phone, and the Trance Max automatically does its hands-free thing. Isn't it refreshing to know your speaker totally gets you?

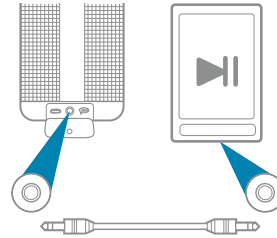
Check out the chart below for a complete guide on handling calls with your Trance Max.

Situation	Short Press Play/Pause Button	Long Press Play/Pause Button
1 st Incoming call	Pick up call	Reject call
On call	End call	Move call from speaker to device
2 nd Incoming call	Call 1 on hold, pick up call 2	Reject call 2
Both calls active	Hang up call 1, switch to call 2	Switch between call 1 and call 2

HOOKING UP OLD-SCHOOL AUDIO, JACK

1. Plug one end of the cord into the speaker and the other into the headphone jack on your device.
2. Turn on the speaker.
3. Hit PLAY on your device and crank it up — or down if you're lame.

You'll have to play and pause the music from your device, not your speaker. No problem. You're there anyway, right?



COMING CLEAN

A soft, dry towel is all you need to clean off your speaker. Using water, harsh cleaners, or anything else only starts messing with the mechanics inside. So, yeah, don't do it.

THE VOICE FROM WITHIN

When your JAM Trance Max isn't rocking out, it can tell you all sorts of things it's doing: when it's powering on, ready to pair, paired, at maximum volume, charging, receiving a call, ending a call, rejecting a call, and powering off.

Just like the global gadget it is, your speaker toggles between several languages or no language at all. Your speaker can parlay with you in English, Spanish, French, or Portuguese. Making the change between language and tone is as simple as poking a paperclip, safety pin, or the included language selector pin into the small hole on the bottom of the speaker. Click though until the speaker starts speaking your language.

1 YEAR LIMITED WARRANTY

For detailed warranty instructions and information visit:
USA: www.jamaudio.com/customer-support/warranty-1yr
CAN: <http://canada.jamaudio.com/warranty-1yr>

To obtain warranty service on your JAM product, contact a Consumer Relations representative by telephone or email for assistance (you can find their contact info on page 1). Please make sure to have the model number of the product available.

STUFF THE GOVERNMENT MAKES US SAY

FCC Compliance:

Note: This device complies with part 15 of the FCC Rules. Operation is subject to the following two conditions: (1) This device may not cause harmful interference, and (2) this device must accept any interference received, including interference that may cause undesired operation.

Note: This equipment has been tested and found to comply with the limits for a Class B digital device, pursuant to part 15 of the FCC Rules. These limits are designed to provide reasonable protection against harmful interference in a residential installation.

This equipment generates, uses, and can radiate radio frequency energy and, if not installed and used in accordance with the instructions, may cause harmful interference to radio communications. However, there is no guarantee that interference will not occur in a particular installation.

If this equipment does cause harmful interference to radio or television reception, which can be determined by turning the equipment off and on, the user is encouraged to try to correct the interference by one or more of the following measures:

- Reorient or relocate the receiving antenna.
- Increase the separation between the equipment and receiver.
- Connect the equipment into an outlet on a circuit different from that to which the receiver is connected.
- Consult the dealer or an experienced radio/TV technician for help.

Note: Changes or modifications not expressly approved by HMDX could void the user's authority to operate this equipment.

IC Caution: RSS-GEN Issue 4 November 2014

This device complies with Industry Canada's licence-exempt RSSs.

Operation is subject to the following two conditions: (1) This device may not cause interference, and (2) This device must accept any interference, including interference that may cause undesired operation of the device.

STUFF OUR LAWYERS MAKE US SAY

IMPORTANT SAFEGUARDS:

When using an electrical product, basic precautions should always be followed, including the following:

READ ALL INSTRUCTIONS BEFORE USING

- **WARNING:** Do not place speakers too close to ears. May cause damage to eardrums, especially in young children.
- Use this product only for its intended use as described in this manual. Do not use attachments not recommended by HMDX.
- HMDX is not liable for any damage caused to smartphones, iPod/MP3 players, or any other device.
- Do not place or store this product where it can fall or be dropped into a tub or sink.
- Do not place or drop into water or any other liquid.
- Not for use by children. **THIS IS NOT A TOY.**
- Never operate this product if it has a damaged cord, plug, cable, or housing.
- Keep away from heated surfaces.
- Only set on dry surfaces. Do not place on surface wet from water or cleaning solvents.

Attention California Residents:

WARNING: This product contains chemicals known to the State of California to cause cancer, birth defects, and other reproductive harm.

A MESSAGE FROM THE ENVIRONMENT

WARNING:

This product has an internal, non-replaceable lithium battery. Please dispose in accordance with your local, state, province, and country guidelines.

This product contains small parts that may present a choking hazard for young children.

CAUTION: All servicing of this product must be performed by authorized HMDX Service Personnel only.