

USER GUIDE AND WARRANTY INFORMATION

jamaudio
TRANSIT MINI BUDS

HEY THERE!

Thank you for purchasing the **JAM Transit Mini Buds**. Check out the sections below for all the important information about your new earbuds.

WE'RE HERE TO HELP. CONTACT US!

You've got questions? We've got answers.

Contact a Consumer Relations representative by phone or email to help answer any questions. Please be sure to have the model number of your product available. (Hint: It's HX-EP315)

Register your earbuds! Information about where you bought them and how you're using them is like gold for the people who make these earbuds.

To register, visit:

USA: www.jamaudio.com/customer-support/product-registration

CAN: canada.jamaudio.com/product-registration

USA

✉ cservice@jamaudio.com
☎ 1.888.802.0040
8:30am–7:00pm EST M–F

CANADA

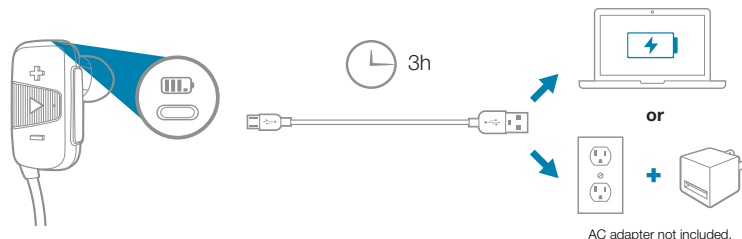
✉ cservice@homedicsgroup.ca
☎ 1.888.225.7378
8:30am–5:00pm EST M–F

JUST CHARGE IT

Charging the earbuds is so easy you've probably figured it out by now, but just in case, you've got two options: you can charge them using your computer or a wall outlet. The Transit Mini Buds need about 3 hours for up to 7 hours of party time.

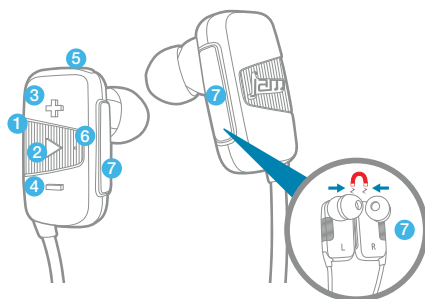
1. The cord that came with the earbuds — the one with the USB on one end and the micro USB on the other — will work with your computer.

2. If you want to use the wall outlet, you'll need to pick up a power cord with a micro USB the next time you're at the store, or use any USB AC adapter, including the one for your cell phone.



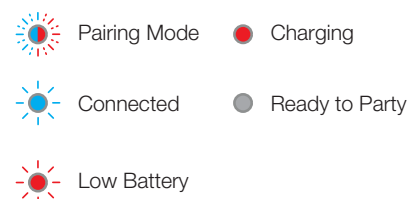
CONTROL YOUR DESTINY ... OR AT LEAST YOUR EARBUDS

1. This is the power button
2. Push it to play, push it again to pause
3. Turn the music up (press and hold to skip to the next track)
4. Turn the music down (press and hold to move to the previous track)
5. The power cord goes here
6. Shed some light on what your earbuds are doing (see chart to the right for details)
7. Smart magnetic connection — keeps your earbuds together when not in use



SHED SOME LIGHT

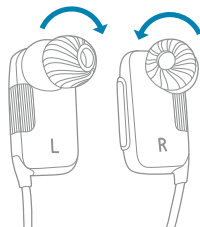
The LED light on your earbuds lets you know what they're doing.



LOCK IT DOWN

Tired of your buds always falling out of your ears? Our SecurFit™ tips are here to save the day.

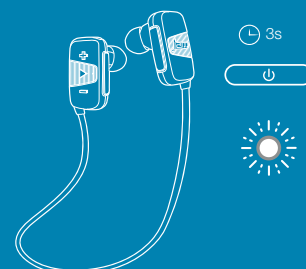
1. Place SecurFit™ tips in ear.
2. Turn until comfortably locked in place.



BLUETOOTH® CONNECTION — IT'S A SETUP

Like any amazing couple, this one starts with a connection — one between your device and the earbuds' Bluetooth. Here's how it works:

1. Make sure the smartphone, tablet, or computer you're using with the earbuds has Bluetooth.
2. Turn on the earbuds (press and hold the power button for 3 seconds) and look for the little blinking light.



Continued on page 2.

BLUETOOTH® CONNECTION, CONTINUED

3. Do whatever your device needs you to do on its end.
4. Look for Jam Transit Mini Buds in your device's *Bluetooth* list or click YES.
5. Now hit PLAY on your earbuds and crank it up — or down if you're lame.

The device and *Bluetooth* will find each other every time, as long as the earbuds are set to *Bluetooth* and your device's *Bluetooth* is, you know, on.

If you're connecting to a computer, you may have some extra steps on that end. You'll have to get that information from the computer company.

Depending on your device, you may be prompted to enter a pairing code. If prompted, enter "0000" as the code.

Note: If you turn on your Transit Mini Buds but haven't started the party yet, they will automatically power off after 2 minutes of unpaired inactivity.

Note: Once paired, if you pause the party for 15 minutes or more, the Transit Mini Buds will enter into a lower power-consumption state.



LOOK MA, NO HANDS!

When friends call to interrupt your party of one — and you know they will — answer the phone without disconnecting from your JAM Transit Mini Buds. Yes, that's right. Your earbuds have hands-free calling, too. How amazing is that? Here's how it works:

1. Make sure your phone and earbuds are connected through *Bluetooth*.
2. Answering and ending a call works the same way: simply click the PLAY/PAUSE button on your Transit Mini Buds.
3. If you'd rather not talk, hold down the PLAY/PAUSE button on your Transit Mini Buds for 3 seconds to ignore the call.

THE COOLEST PART: The Transit Mini Buds know when a call is coming in and pause the music before ringing. When you hang up, the music starts where it left off — and so does the party. If it's you making the call, just start dialing from your phone, and the Mini Buds automatically do their hands-free thing. Isn't it refreshing to know your earbuds totally get you?

NOTE: If your Transit Mini Buds are connected to a smartphone, you can talk to Siri® (or any other voice control assistant). Just hold down the PLAY/PAUSE button, and voilà!

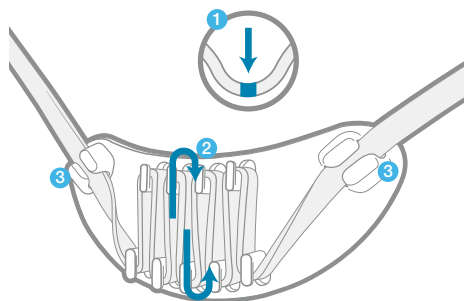
Check out the chart below for a complete guide on handling calls with your Transit Mini Buds.

Situation	Short Press Play/Pause Button	Long Press Play/Pause Button
1 st Incoming call	Pick up call	Reject call
On call	End call	Move call from earbuds to device
2 nd Incoming call	Call 1 on hold, pick up call 2	Reject call 2

THE PERFECT FIT

Put the buds in your ears with the strap behind your neck (trust us, no one looks good with the strap in front) to see if the length is comfortable. If the fit is too loose or too firm, adjust it with the CustomFit™ cord management system.

1. Find the middle of the cord (indicated by the colored square).
2. Wind cord around clips as many times as necessary until the length is comfortable.
3. Secure both ends of the cord through the locks.
4. Place behind your neck and you're good to go!



LITTLE BIT OF SWEAT? NO WORRIES.

Working out? Not a problem. These earbuds are totally sweat resistant! The smart folks who made these earbuds designed them to keep the party going through just about any activity (they call it IPX4). But those designers aren't miracle workers. Doing something like going for a swim in the deep end while wearing your earbuds will eventually fill those holes you need for incredible sound with water. Remember to keep the top flap flush with the earbuds for the best protection.

COMING CLEAN

A soft, dry towel is all you need to clean off your earbuds. Using water, harsh cleaners, or anything else only starts messing with the mechanics inside. So, yeah, don't do it. Remember to keep the top flap flush with the earbuds for the best protection.

1 YEAR LIMITED WARRANTY

For detailed warranty instructions and information visit:
 USA: www.jamaudio.com/customer-support/warranty-1yr
 CAN: canada.jamaudio.com/warranty-1yr

To obtain warranty service on your JAM product, contact a Consumer Relations representative by telephone or email for assistance (you can find their contact info on page 1). Please make sure to have the model number of the product available.

STUFF THE GOVERNMENT MAKES US SAY

FCC Compliance:

Note: This device complies with part 15 of the FCC Rules. Operation is subject to the following two conditions: (1) This device may not cause harmful interference, and (2) this device must accept any interference received, including interference that may cause undesired operation.

Note: This equipment has been tested and found to comply with the limits for a Class B digital device, pursuant to part 15 of the FCC Rules. These limits are designed to provide reasonable protection against harmful interference in a residential installation.

This equipment generates, uses, and can radiate radio frequency energy and, if not installed and used in accordance with the instructions, may cause harmful interference to radio communications. However, there is no guarantee that interference will not occur in a particular installation.

If this equipment does cause harmful interference to radio or television reception, which can be determined by turning the equipment off and on, the user is encouraged to try to correct the interference by one or more of the following measures:

- Reorient or relocate the receiving antenna.
- Increase the separation between the equipment and receiver.
- Connect the equipment into an outlet on a circuit different from that to which the receiver is connected.
- Consult the dealer or an experienced radio/TV technician for help.

Note: Changes or modifications not expressly approved by HMDX could void the user's authority to operate this equipment.

IC Caution: RSS-GEN Issue 4 November 2014

This device complies with Industry Canada's licence-exempt RSSs.

Operation is subject to the following two conditions: (1) This device may not cause interference, and (2) This device must accept any interference, including interference that may cause undesired operation of the device.

STUFF OUR LAWYERS MAKE US SAY

IMPORTANT SAFEGUARDS:

When using an electrical product, basic precautions should always be followed, including the following:

READ ALL INSTRUCTIONS BEFORE USING

- **WARNING:** Listen responsibly. To avoid hearing damage, make sure the volume on your device is turned down before connecting headphones. After placing headphones on your ears, gradually turn up the volume until you reach a comfortable listening volume.
- Use this product only for its intended use as described in this manual. Do not use attachments not recommended by HMDX.
- HMDX is not liable for any damage caused to smartphones, iPod/iPad/MP3 players, or any other device.
- Do not place or store this product where it can fall or be dropped into a tub or sink.
- Do not place or drop into water or any other liquid.
- Not for use by children. THIS IS NOT A TOY.
- Never operate this product if it has a damaged cord, plug, cable, or housing.
- Keep away from heated surfaces.
- Only set on dry surfaces. Do not place on surface wet from water or cleaning solvents.

Attention California Residents:

WARNING: This product contains chemicals known to the State of California to cause cancer, birth defects, and other reproductive harm.

A MESSAGE FROM THE ENVIRONMENT

WARNING:

This product has an internal, non-replaceable lithium battery. Please dispose in accordance with your local, state, province, and country guidelines.

This product contains small parts that may present a choking hazard for young children.

CAUTION: All servicing of this product must be performed by authorized HMDX Service Personnel only.